

REVISED 07-24-15

THIS MAP WAS PREPARED FOR ASSESSMENT PURPOSE ONLY

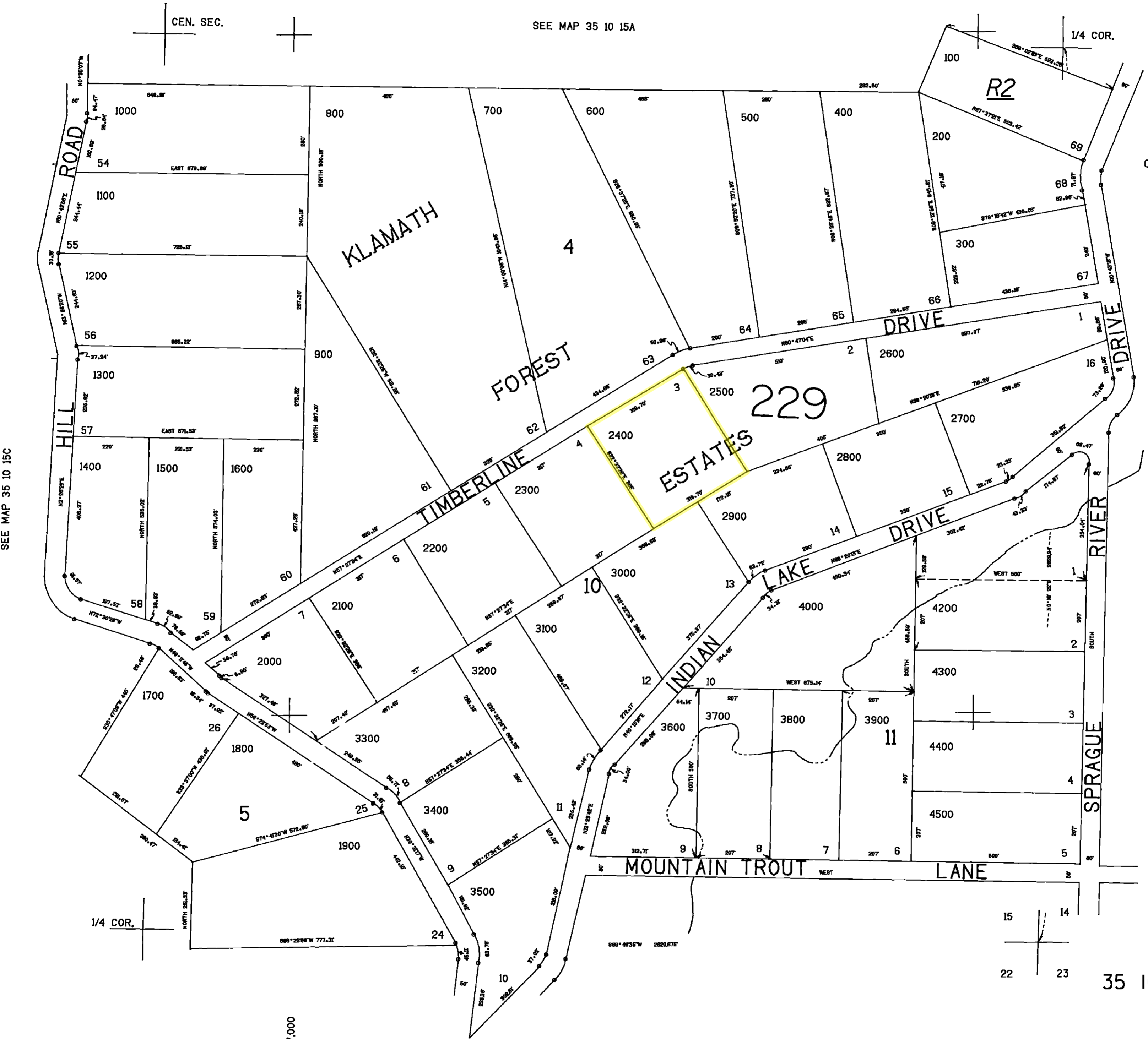
SE1/4 SEC. 15 T.35S. R.10E. W.M. KLAMATH COUNTY

35 10 15D

1"=200'

CEN. SEC.

SEE MAP 35 10 15A

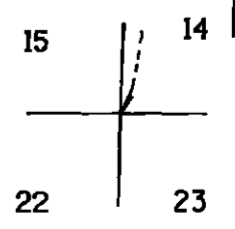


SEE MAP 35 10 15C

CANCELLED NO. 4100

SEE MAP 35 10 14C

317.1



35 10 15D

1.727.000

SEE MAP 35 10 22A